

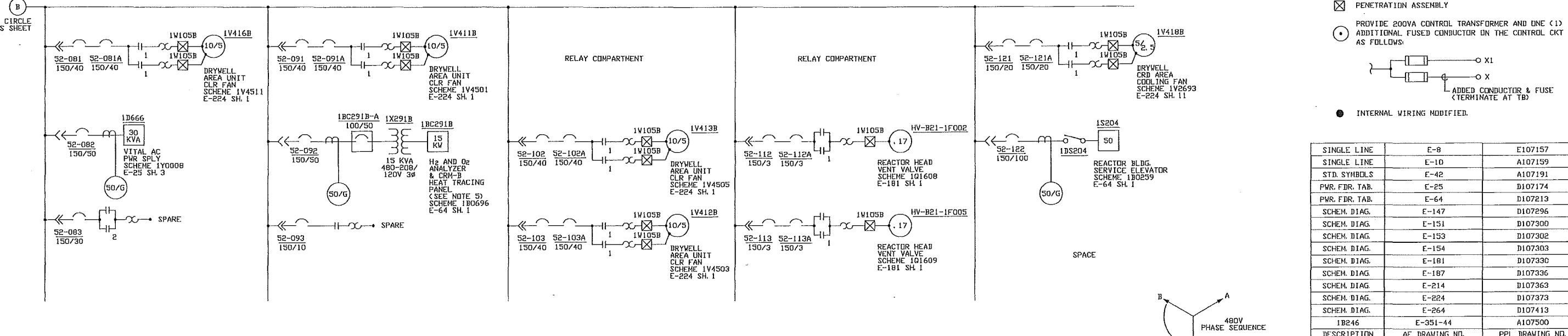
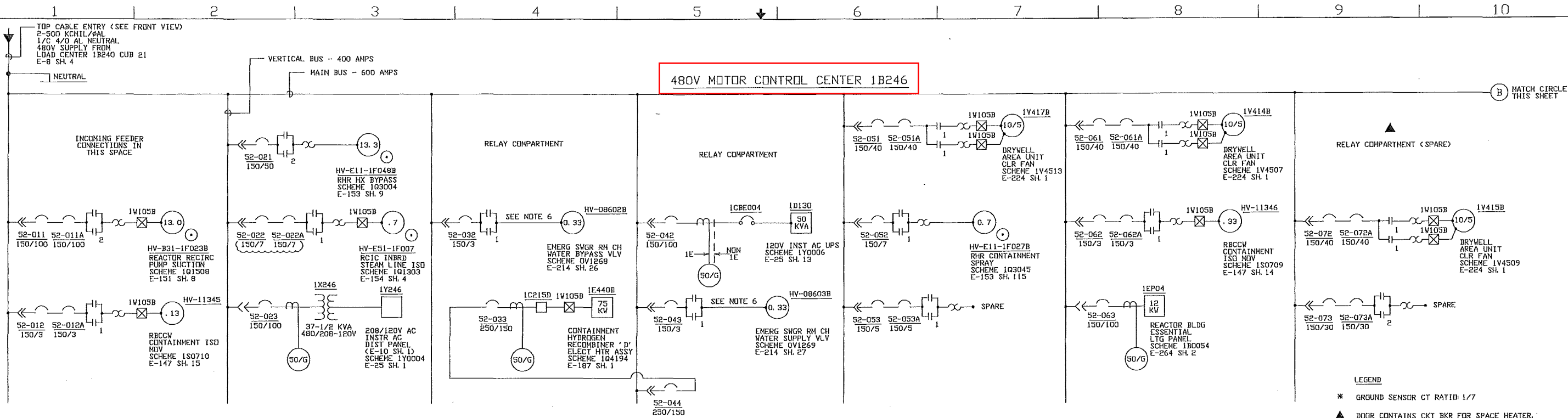
- LEGEND**
- * L.C. TRANSFORMER 1000/1333 KVA, 3φ, AA/FA, 150° C VENT DRY, 13.2-0.48KV GRD. Y/D, 277 KV, Z=8.0X
 - L.C. TRANSFORMER 1500/2000 KVA, 3φ, AA/FA, 150° C VENT DRY, 13.2-0.48KV GRD. Y/D, 277 KV, Z=8.0X
 - L.C. TRANSFORMER 750 KVA, 3φ, AA, 150° C VENT DRY, 4.16KV-D, 48KV GRD. Y/D, 277 KV, Z=8.75X
 - ▲ L.C. TRANSFORMER 750/1000 KVA, 3φ, AA/FA, 150° C VENT DRY, 4.16KV-D, 48KV GRD. Y/D, 277 KV, Z=8.75X
 - ⊕ ANSI STANDARD BREAKERS
 - ⊕ 3φ AIR CIRCUIT BREAKER DRAWOUT TYPE - NON AUTO TRIP
- 1A - PL. MAJOR EQUIPMENT NUMBER (TYPICAL)

- NOTES:**
- FOR 13.8KV, 4.16KV AND 480 VOLT BUS LOADS SEE DWS. E-4, E-5, AND E-8.
 - PHASE TRANSITION OF UNIT 2 AUXILIARY POWER SYSTEM IS MADE AT LOW VOLTAGE TERMINALS OF THE UNIT 2 AUXILIARY TRANSFORMER.
 - ALL BREAKERS CLOSED FOR NORMAL OPERATION EXCEPT THOSE MARKED N.D.
 - DELETED.
 - WHEN ALIGNING D/G 'E' FOR D/G 'A' CBMS2-S10A01 SHALL BE REMOVED FROM COMPARTMENT 80A10A01 AND INSERTED IN COMPARTMENT 80A10A02. A SIMILAR PROCEDURE IS FOLLOWED WHEN ALIGNING D/G 'E' FOR D/G 'B' OR D/G 'C' OR D/G 'D'.
 - DS0570 AND DS0571 ARE 3-WAY SPLICE, 15KV, 600A, ELASTIMEL SPLICE ASSY TYPE 850-L3 WITH ALL COMPONENTS.
 - RELOCATED SWITCHYARD DETAILS TO NEW DEVELOPED SHEET 1A; MOVED 13.8KV DETAILS TO E-1, SH.2 TO THIS SHEET, PER EWR H00133.
 - TRANSFORMER IMPEDANCES SHOWN WITH A '*' SYMBOL ARE APPROXIMATE VALUES. REFER TO NAMEPLATE OR TEST DATA FOR ACTUAL VALUE. TRANSFORMER IMPEDANCES SHOWN WITH A 'Z' SYMBOL ARE ACTUAL VALUES.
 - FLEX GENERATOR TAP BOX AND DISCONNECT SWITCH.

E-4	E107153
E-5	E107154
E-8	E107157
E-9	E107158
AE DRAWING NO. PPL DRAWING NO.	
REFERENCE DRAWINGS	
INCORPORATED REV'S 43, 44, 45 & 46 (EC 1719084)	
DRAWING APPROVAL ATTACHED TO NIMS MEDIA AS APPROVAL HISTORY	
SUSQUEHANNA S.E.S.	
UNIT 1 & 2	
SINGLE LINE DIAGRAM	
STATION	
AREA	N/A
ELEV.	N/A
SCALE	NONE
PPL CORP.	
PPL DRAWING NO.	SHEET NO.
E107150	1
AE DRAWING NO.	SHEET NO.
E-1	37

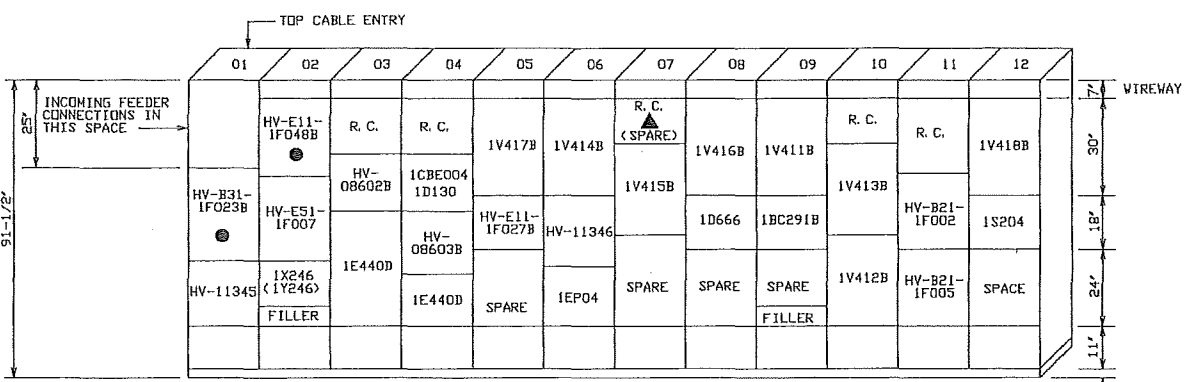
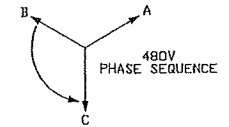
THIS DRAWING IS THE PROPERTY OF PPL CORP. AND CONTAINS PROPRIETARY AND CONFIDENTIAL INFORMATION WHICH MUST NOT BE REPRODUCED OR TRANSMITTED IN ANY FORM OR BY ANY MEANS WITHOUT THE WRITTEN AUTHORIZATION OF PPL CORP.

480V MOTOR CONTROL CENTER 1B246



- LEGEND**
- * GROUND SENSOR CT RATIO: 1/7
 - ▲ DOOR CONTAINS CKT BKR FOR SPACE HEATER.
 - ⊠ PENETRATION ASSEMBLY
 - PROVIDE 200VA CONTROL TRANSFORMER AND ONE (1) ADDITIONAL FUSED CONDUCTOR ON THE CONTROL CKT AS FOLLOWS:
 - INTERNAL WIRING MODIFIED.

SINGLE LINE	E-8	E107157
SINGLE LINE	E-10	A107159
STD. SYMBOLS	E-42	A107191
PWR. FDR. TAB.	E-25	D107174
PWR. FDR. TAB.	E-64	D107213
SCHEM. DIAG.	E-147	D107296
SCHEM. DIAG.	E-151	D107300
SCHEM. DIAG.	E-153	D107302
SCHEM. DIAG.	E-154	D107303
SCHEM. DIAG.	E-181	D107330
SCHEM. DIAG.	E-187	D107336
SCHEM. DIAG.	E-214	D107363
SCHEM. DIAG.	E-224	D107373
SCHEM. DIAG.	E-264	D107413
1B246	E-351-44	A107500
DESCRIPTION	AE DRAWING NO.	PPL DRAWING NO.



MCC 1B246 FRONT VIEW
REACTOR BUILDING EL. 719'-1"

AUXILIARY RELAY TABULATION				
RELAY TAG NO.	LOCATION	TYPE	CONTACT ARRANGEMENT	NOTES
95-E11	1B246031	D26HR08A	8 NC	E-185 SH. 3
95-E51	1B246031	D26HR44A	4 ND, 4 NC	E-185 SH. 3
42FX-246012	1B246041	AGA, EGPIN	4 PDT	E-147 SH. 15
42RX-246012	1B246041	AGA, EGPIN	4 PDT	E-147 SH. 15
42XF-246011	1B246041	P. B. MDR 4094	4 PDT	E-151 SH. 8
42XR-246011	1B246041	P. B. MDR 4094	4 PDT	E-151 SH. 8
42FX-246062	1B246111	AGA, EGPIN	4 PDT	E-147 SH. 14
42RX-246062	1B246111	AGA, EGPIN	4 PDT	E-147 SH. 14
42XF-246021	1B246111	P. B. MDR 4094	4 PDT	E-153 SH. 9
42XR-246021	1B246111	P. B. MDR 4094	4 PDT	E-153 SH. 9
62X1B246062	1B246111	AGASTAT EGPIN	4 PDT	E-147 SH. 14
62X11B246062	1B246111	AGASTAT EGPIN	4 PDT	E-147 SH. 14
62X1B246022	1B246031	AGASTAT EGPIN	4 PDT	E-154 SH. 4
62X11B246022	1B246031	AGASTAT EGPIN	4 PDT	E-154 SH. 4

ALL EQUIPMENT ON THIS DWG IS Q LISTED EXCEPT AS NOTED

- NOTES:**
1. DELETED
 2. FOR STANDARD SYMBOLS FOR ELECTRICAL DWGS. SEE E-42.
 3. DELETED
 4. ALL STARTERS ON THIS SHEET HAVE (74) RELAYS.
 5. THE LOAD OF TRANSFORMER 1X219B IS NOT MORE THAN 10 KVA.
 6. THERMAL OVERLOADS REMOVED.

INCORPORATED
IDCN 38 (EC 1260857),
IDCN 45 & 46
(EC 1624472).

DRAWING APPROVAL
ATTACHED TO NIMS
MEDIA AS
APPROVAL HISTORY

REV	DESCRIPTION	APPROVED
30	SUSQUEHANNA S.E.S. UNIT 1 SINGLE LINE METER & RELAY DIAG. 480V MOTOR CONTROL CENTERS 1B246 DIV II	

AREA 28	ELEV. 719'-1"	SCALE NONE
PPL CORP.		
PPL DRAWING NO. E107158	SHEET NO. 20	REV. NO. 30
AE DRAWING NO. E-9	SHEET NO. 20	

PPL SUB FROM 35095 (01/2012)